
PRINCESS 50







PRINCESS 50



The Princess 50 is a powerful and agile craft with extraordinary volume for her size.

The exterior space is equal to many larger craft with a large teak-laid cockpit, wide side decks and transom platform large enough to accommodate a tender.

The flybridge provides the perfect daytime entertaining space with generous seating and a large sunbed aft.









The attention to detail and standard of finish is of the highest standard throughout. Large windows wrap around the main deck filling the saloon with natural light and ensuring excellent visibility for the lower helm.

Located on the lower deck the galley is well equipped and accommodates a full height fridge freezer. Also contained in the lower accommodation are three spacious guest cabins.

The owner's en-suite stateroom is situated amidships where it enjoys the full beam and features panoramic windows to both sides filling the cabin with natural light.

Owner's Stateroom • Forward Guest Cabin • Starboard Guest Cabin

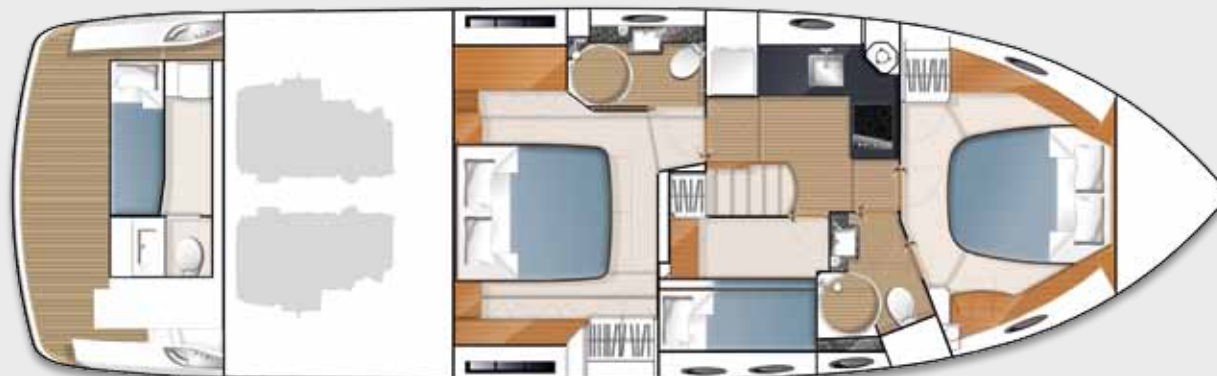




Flybridge Layout



Upper Accommodation Layout



Lower Accommodation Layout

PRINCIPAL DIMENSIONS

Length overall (incl. pulpit)	50ft 5in (15.37m)
Length overall (excl. pulpit)	49ft 2in (14.98m)
Beam	15ft (4.57m)
Draft	4ft 2in (1.27m)
Displacement approx. (Twin Volvo D11-670)	22,900 kg* (50,486lbs)
Fuel capacity	550 gal/660 US gal/2500L
Water capacity (incl. calorifier)	130 gal/156 US gal/592L

STANDARD EQUIPMENT

Power-assisted electro-hydraulic steering system
Bow thruster (120kgf/265lbf)
24v DC/240v AC electrical system
240v shore power with 60-amp float battery charger
220v/240v diesel generator (7kW)

Dual station remote control electric anchor winch

Dual station electric trim tabs with indicators

Dual station autopilot

Dual station VHF with DSC R/T with intercom

Dual station speed and distance log

Dual station echo sounder with alarm

Remote control searchlight

Combination microwave/conventional oven/grill

Full height refrigerator/deep freeze

Cocktail cabinet with refrigerator

Flybridge wetbar including sink and electric barbecue

Flybridge top loading coolbox

Flybridge sunbed and cushions

Electric quietflush toilets

Saloon LED TV/DVD

Teak-laid deck, cockpit, transom platform/flybridge stairway/ stairs to side decks

Triple opening stainless-steel framed saloon doors

Full length transom platform with tender storage facilities

Transom door

Hot and cold transom shower

Cockpit night cover

ENGINES – DIESEL

Twin Volvo D11-670 (2 x 670mhp)

Speed range: 29–32 knots †

Twin Caterpillar C12 A (2 x 715mhp)

Speed range: 30–33 knots †

SPECIFICATION

DECK FITTINGS

- Teak-laid deck, cockpit, transom platform and flybridge stairway and stairs to side decks
- Reversible electric anchor winch with foredeck, main helm and flybridge controls
- Stemhead roller with automatic anchor launch and retrieve
- Self stowing 20kg/44lbs Delta anchor with 40m of chain
- Deck hatch access to chain locker
- Bow rope stowage locker
- Stainless-steel bow, stern and spring cleats
- Stainless-steel bow and stern fairleads
- Stainless-steel pulpit and guard rails
- Stainless-steel coachroof and flybridge handrails
- Foredeck hatch
- Stainless-steel rubbing band with rubber insert
- Full set of IMCO navigation lights
- Riding light
- Twin beam searchlight with dual-station remote controls
- Loud hailer/intercom
- Twin electric horns
- Fuel and water fillers
- Coachroof sunbed recess
- Fender baskets on transom platform

AFT COCKPIT

- Self-draining
- Upholstered seating
- Cockpit lighting
- Cockpit cover
- Stainless-steel handrails
- Lockable gas strut assisted hatch to lazarette/optional crew cabin
- Lockable gas strut assisted hatch to engine room
- Transom door leading to bathing platform
- Transom bathing platform with foldaway swimming ladder, hot and cold shower
- Dinghy chock system
- 220/240v shore support inlet and cable stowage locker
- Storage locker for fenders and liferaft (not supplied)
- Steps to side deck
- Remote fuel cocks located in locker
- Integral stairway to flybridge with teak treads
- Reserve manual bilge pump with valve chest in locker

FLYBRIDGE

- Dual station instruments and controls (see Lower Helm Position)
- Helm position featuring adjustable wheel
- Twin helm seats with fore and aft adjustment
- Audible and visual alarm for bilge pumps
- Chart table
- Large U-shaped upholstered seating
- Table
- Aft sunbed with cushions and stowage space below
- Loudspeakers linked to saloon stereo
- Hatch to aft cockpit
- Wind deflector screens
- Stainless-steel handrails
- GRP radar arch
- Console and seat covers
- Twin matching whip aerials for VHF/RT and radio
- Wetbar with electric barbecue, stowage, sink, hot and cold water supply
- Refrigerated top loading coolbox

LOWER HELM POSITION

- Twin helm seats with fore and aft adjustment for helmsman
- Instrument console with engine instruments and fuel gauges
- Dual station instruments and controls at Flybridge and Lower Helm Positions:
 - ▶ rudder position indicator
 - ▶ electronic engine controls
 - ▶ audible and visual engine warning system
 - ▶ power-assisted electro-hydraulic steering with adjustable steering wheel
 - ▶ bow thruster control
 - ▶ anchor winch remote control
 - ▶ trim tab controls with indicators
 - ▶ autopilot
 - ▶ VHF with DSC R/T and intercom to flybridge
 - ▶ speed and distance log
 - ▶ echo sounder with alarm
 - ▶ remote control searchlight
 - ▶ high speed magnetic compass
 - ▶ horn button
 - ▶ automatic foghorn with loudhailer
- Chart table with light and chart stowage
- Windscreen wipers with freshwater windscreen wash system
- Bilge pump controls with visual pump running warnings
- 24v and 220/240v electrical control panels
- Clear glass toughened windscreen for good low light vision
- Black mesh sunscreens
- Riding light, helm and navigation light control switches
- Stowage under helm seat
- 12v outlet
- Red night lighting

DECK SALOON

- Triple stainless-steel framed sliding doors to cockpit
- U-shaped sofa with storage drawers
- Coffee table
- LED TV
- Stereo CD/DVD/radio with saloon and exterior speakers
- Sideboard unit
- Bottle and glass stowage
- Drinks refrigerator
- Curtains to sliding doors
- Venetian blinds or curtains to saloon windows
- Overhead downlighters
- Tinted side windows
- Clock and barometer
- Dining area with U-shaped sofa and table

GALLEY

- Avonite (or similar) worktop
- 4-zone ceramic hob
- Hob extractor fan
- Combination microwave/conventional oven with grill
- Stainless-steel sink with mixer tap
- Full height refrigerator/deep freezer
- Waste disposal bin
- Overhead down lighters and task lighting
- Drawers and storage cupboards
- Dedicated cutlery drawer
- Dedicated crockery stowage
- Chopping board
- Utility area with provision for washer/dryer

ACCOMMODATION

- All cabins and bathrooms feature opening and/or fixed portholes
- All cabins feature 240v power points
- All bathrooms feature electric quiet flush toilets (except optional crew cabin which is manual) and 240v shaver points

OWNER'S STATEROOM

- Full beam cabin with triple vertical portlights each side (one opening)
 - Large double bed
 - Twin bedside tables
 - Wardrobe and shelves
 - Dressing table
 - Mirror
 - Storage lockers and drawers
 - Downlighters and individual berth lights
- En-suite bathroom:**
- Washbasin with Avonite worktop
 - Mirror
 - Toothbrush/mug and towel holders
 - Shower compartment with automatic pump out
 - Extractor fan

FORWARD GUEST CABIN

- Large double bed
- Wardrobes and shelves
- Storage lockers and drawers
- Mirror
- Dressing table with mirror
- Downlighters and individual berth lights
- Deck hatch with flyscreen and blind

En-suite bathroom:

- Washbasin with Avonite worktop
- Shower compartment with automatic pump out
- Extractor fan
- Toothbrush/mug and towel holders
- Mirror

STARBOARD GUEST CABIN

- Two single berths
- Bedside locker
- Wardrobe with shelf
- Mirror
- Storage lockers
- Downlighters and individual berth lights

OPTIONAL CREW CABIN (IN PLACE OF LAZARETTE)

- One single berth
- Storage space
- Individual berth light
- Marine WC (under folding cover)
- Wash basin
- Mirror

POWER AND DRIVE SYSTEMS

- 4-bladed aquafoil propellers in nickel aluminium bronze
- Bow thruster (120kgf/265lbf) with dual station controls
- Engine room lighting
- Lockable access hatch and ladder from cockpit to engine room
- Powered assisted electro-hydraulic steering system
- Trim tabs with indicators
- Electronic engine and gear shift controls
- Engine room extractor fans with electronic time delay
- Dripless shaft seals

ELECTRICAL SYSTEMS

- 24 Volt:**
- 2 x heavy-duty batteries for engine start
 - 4 x heavy-duty auxiliary batteries
 - Engine alternators charges both banks of batteries via split charging system
 - Battery link facility with remote control at helm position
 - Both battery banks are charged using a voltage sensitive relay that parallels both battery banks when a charging source is present
 - Remote battery master switches with controls at main switch panel
 - Circuit breakers on all circuits
 - 24v to 12v converters for certain navigation and radio circuits
- 220/240 Volt:**
- 7kW diesel generator in own sound shield with water cooled specially silenced exhaust
 - Automatic fire extinguisher
 - Shore support inlet in cockpit locker with stowage for cable
 - Generator/shore support change-over switch at main control panel
 - Polarity check system
 - Earth leakage safety trip
 - Circuit breakers on all circuits
 - Power points in:
 - ▶ owner's stateroom
 - ▶ forward stateroom
 - ▶ galley (double)
 - ▶ saloon
 - ▶ guest cabins
 - Shaver points in all bathrooms

FUEL SYSTEM

- Twin fuel tanks (in NS8 marine grade alloy) with interconnection system giving 550 gallons/660 US gallons (2500 litres) capacity
- Fuel fillers on port and starboard side decks
- High capacity fuel filters/water traps
- Remote fuel isolation controls in cockpit locker
- Fuel gauges at lower helm position

WATER SYSTEM

- Water tank in heavy duty polypropylene giving 114 gallons/137 US gallons (520 litres) capacity plus 16 gallon/19 US gallon (72 litre) hot water calorifier
- Water heated by engines and 240v immersion heater
- Automatic water pump with filter
- Pump circuit breaker at main switch panel
- Water level gauge
- Deck filler

FIRE EXTINGUISHERS

- Automatic/manual override fire extinguisher in engine room with warning system at Flybridge and Lower Helm Position
- Hand-operated fire extinguishers in:
 - ▶ owner's stateroom
 - ▶ forward stateroom
 - ▶ starboard cabin
 - ▶ galley
 - ▶ lower helm position
- Additional extinguisher fitted when optional aft cabin is specified

BILGE PUMPS

- Automatic electric bilge pumps (with manual override) in:
 - ▶ engine room (2)
 - ▶ lazarette (1)
 - ▶ forward accommodation (2)
- High-capacity manual bilge pump with valve system and suction points in same areas

OTHER ITEM SUPPLIED AS STANDARD

- Fenders (6) and warps (4)
- Ensign staff
- First aid kit
- Boathook
- Tool kit
- Owner's manual and engine manual
- Quilted bedspreads in all cabins (except optional crew cabin)
- Cockpit cover
- Ship's document case
- Emergency tiller
- Anchor winch back up handle

Princess Yachts International plc
Newport Street
Plymouth
Devon PL1 3QG
UK

Tel: +44 (0)1752 203888
Fax: +44 (0)1752 203777

info@princessyachts.com

www.princessyachts.com